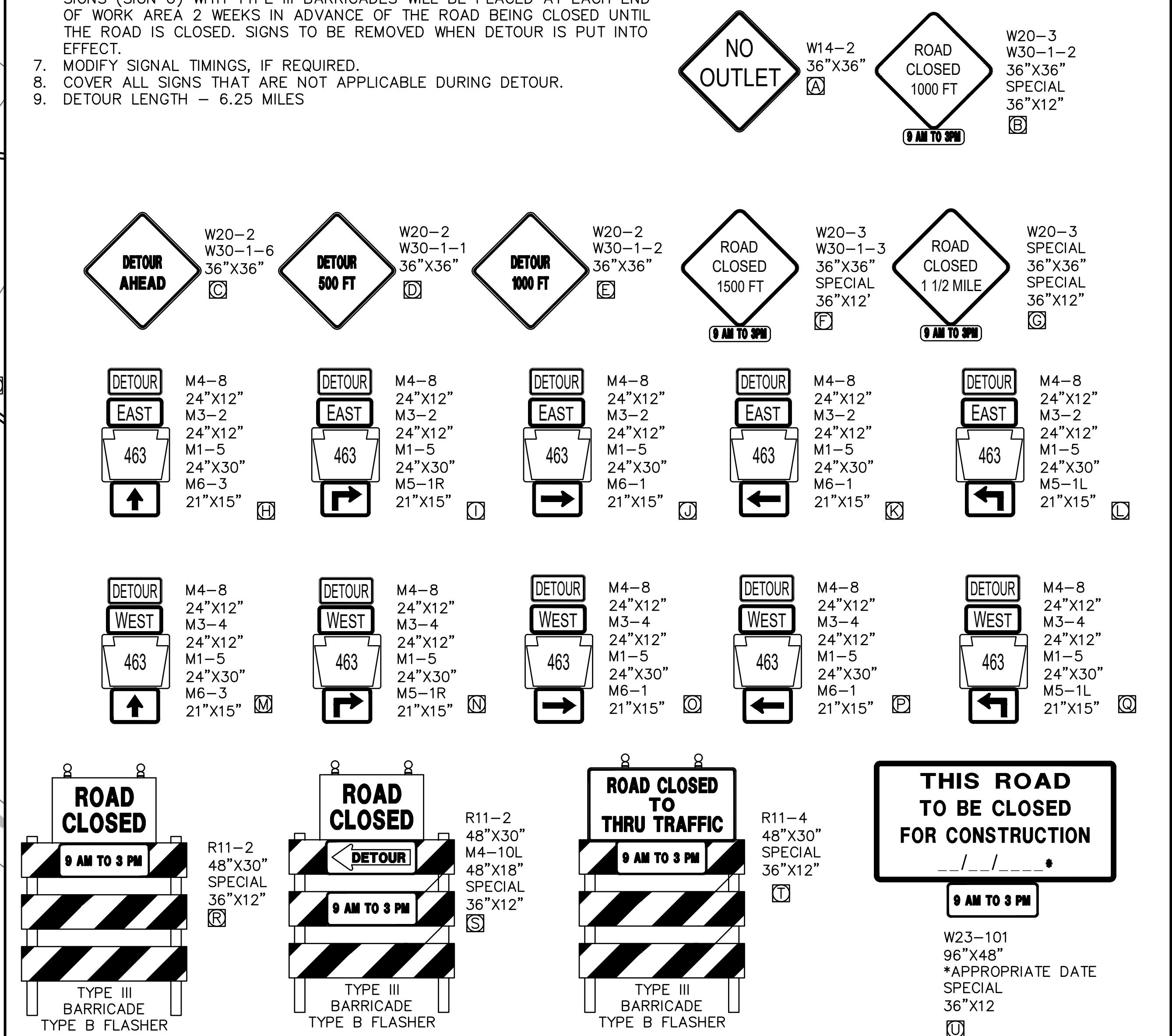
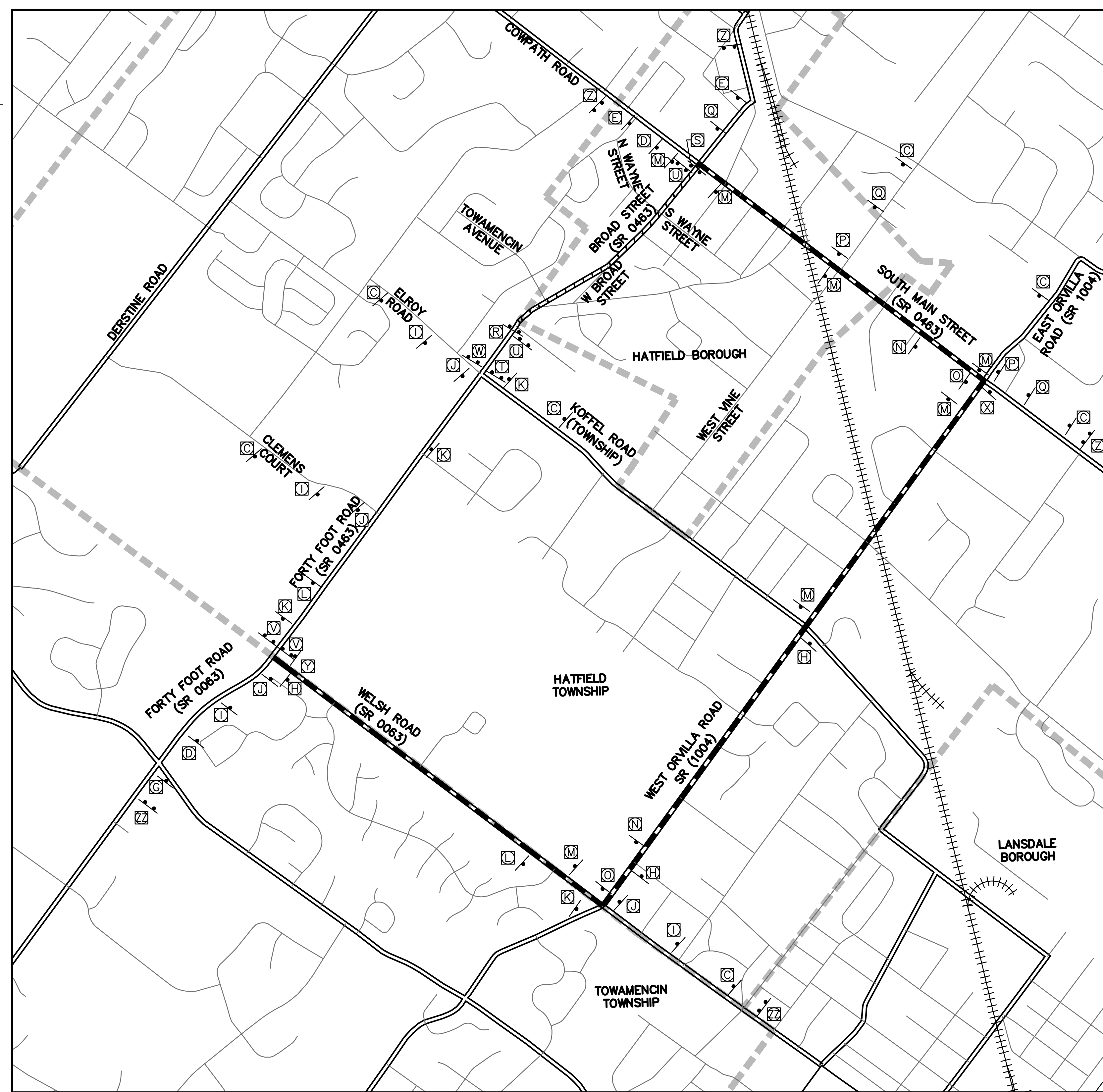


DISTRICT	COUNTY	ROUTE	SECTION	SHEET
6-0	MONTGOMERY COUNTY	-	-	1 OF 4
HATFIELD BOROUGH				
REVISION NUMBER	REVISIONS	DATE	BY	
1	REVISED PER PENNDOT COMMENTS	6/7/23	JMK	
2	REVISED PER PENNDOT COMMENTS	4/17/24	JMK	
3	REVISED PER PENNDOT COMMENTS	5/1/24	JMK	
4	REVISED PER PENNDOT COMMENTS	5/15/24	JMK	
5	REVISED PER PENNDOT COMMENTS	5/24/24	AKK	

DETOUR NOTES:

- ALL SIGN DISTANCES MAY BE ADJUSTED SLIGHTLY TO FOR FIELD CONDITIONS.
- ACCESS WILL BE MAINTAINED TO ALL EXISTING DRIVEWAYS DURING CONSTRUCTION.
- TEMPORARILY REMOVE OR COVER ALL CONFLICTING SIGNS.
- ERADICATE ALL CONFLICTING PAVEMENT MARKINGS.
- THE SPECIAL SIGNS SHALL CONFORM TO THE FOLLOWING:
 - 5" SERIES B LETTERING MINIMUM
 - ORANGE REFLECTORIZED BACKGROUND
 - BLACK LEGEND
- THE "THIS ROAD TO BE CLOSED FOR CONSTRUCTION" SIGNS (SIGN U) WITH TYPE III BARRICADES WILL BE PLACED AT EACH END OF WORK AREA 2 WEEKS IN ADVANCE OF THE ROAD BEING CLOSED UNTIL THE ROAD IS CLOSED. SIGNS TO BE REMOVED WHEN DETOUR IS PUT INTO EFFECT.
- MODIFY SIGNAL TIMINGS, IF REQUIRED.
- COVER ALL SIGNS THAT ARE NOT APPLICABLE DURING DETOUR.
- DETOUR LENGTH - 6.25 MILES



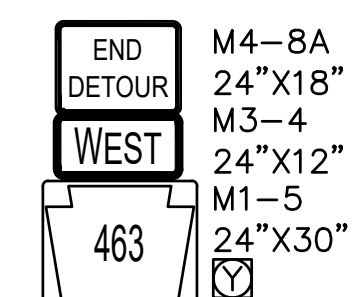
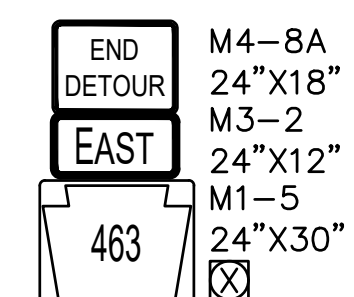
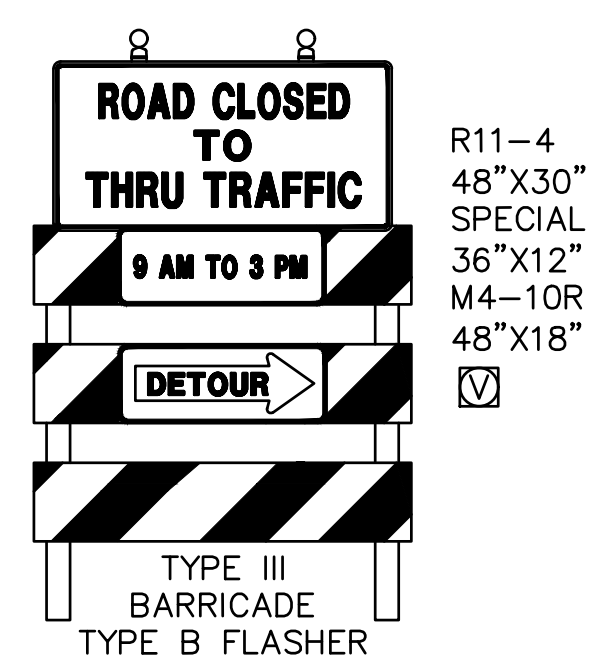
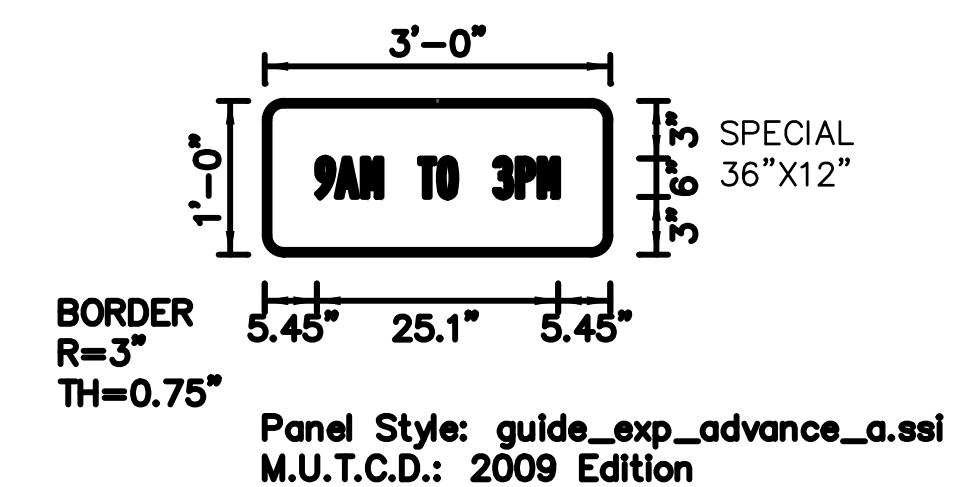
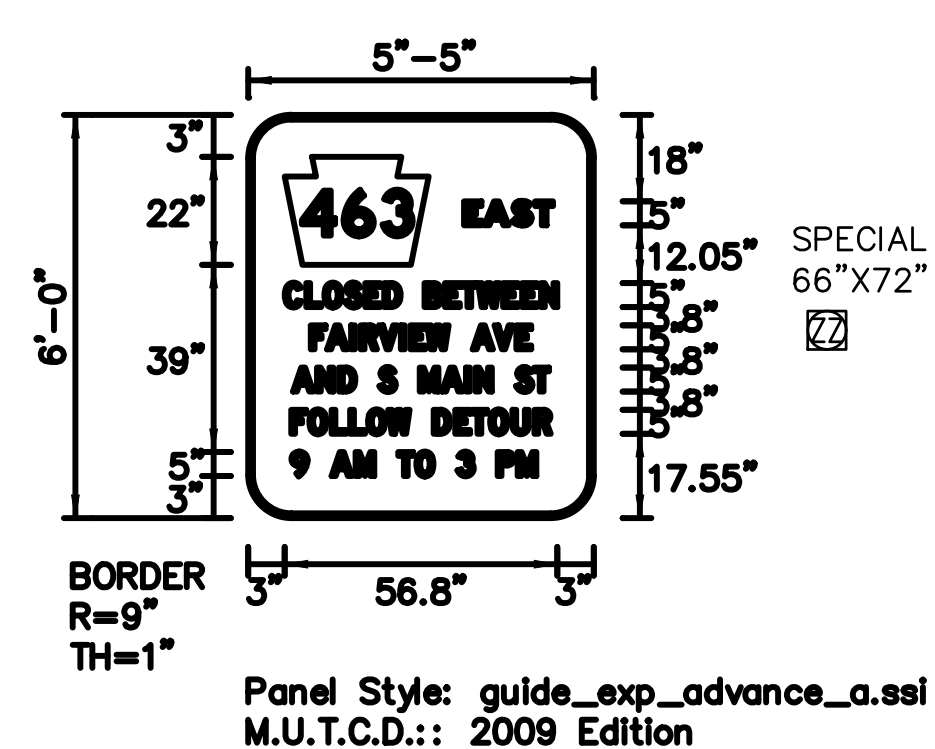
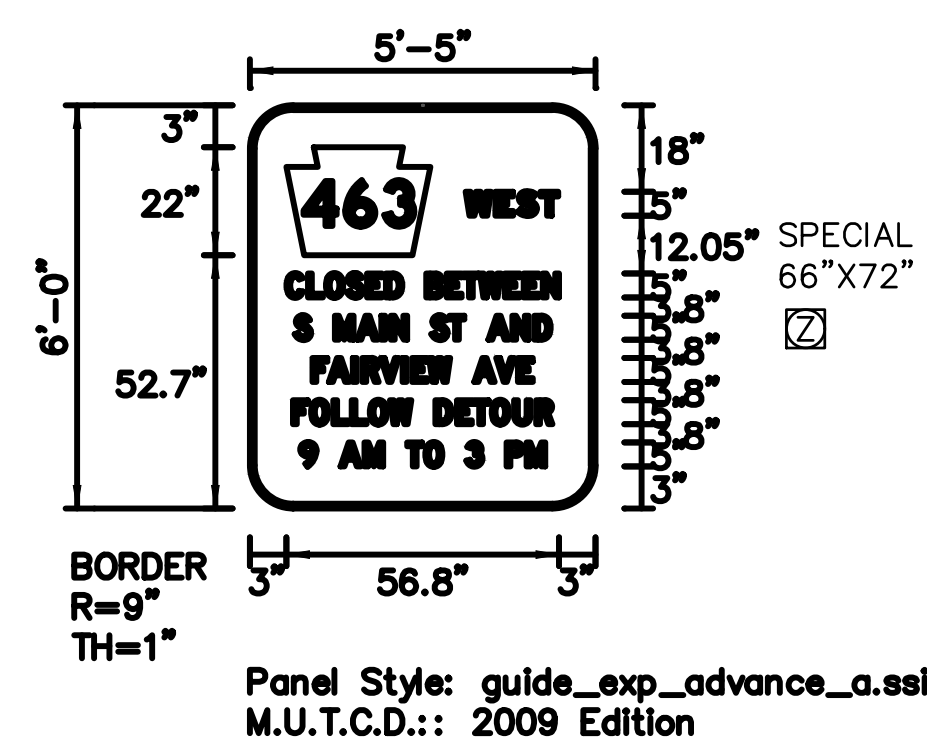
LEGEND

	LOCAL ROAD		TOWNSHIP BOUNDARY
	STATE ROUTE		RAILROAD
	WORK ZONE		DETOUR ROUTE
	SIGN AND IDENTIFYING LETTER		

SCALE

0 800 1600 FEET

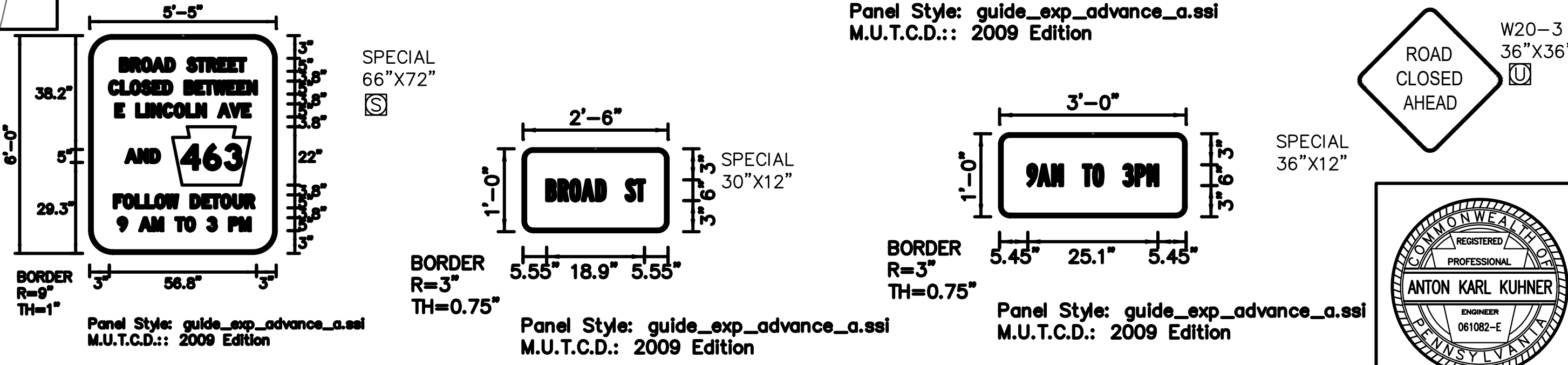
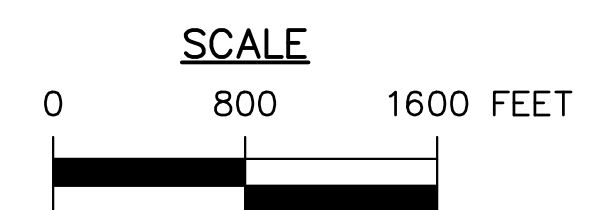
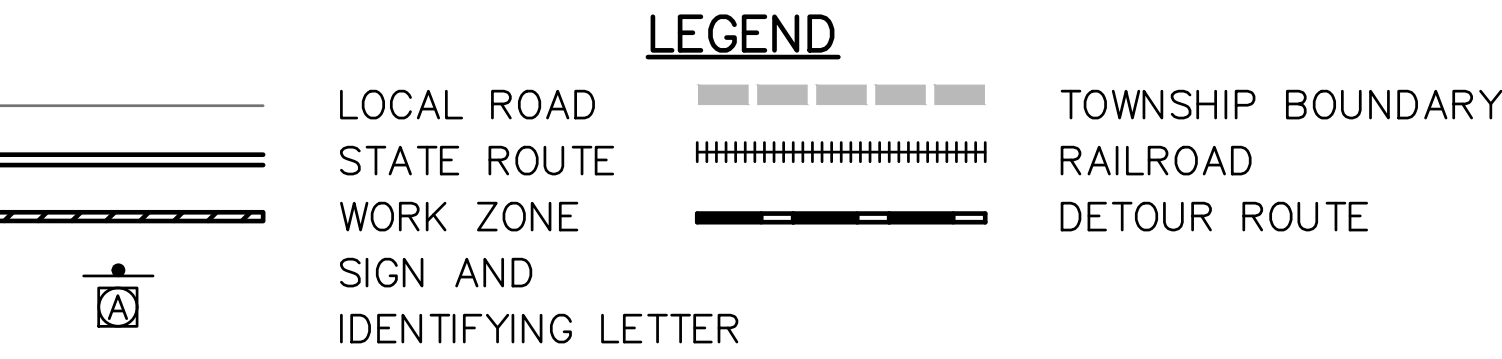
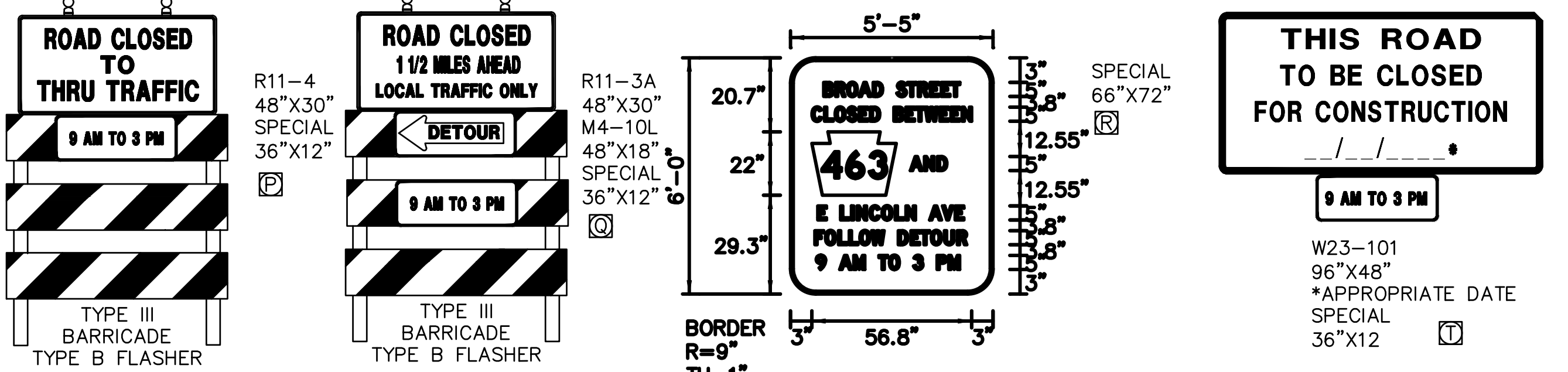
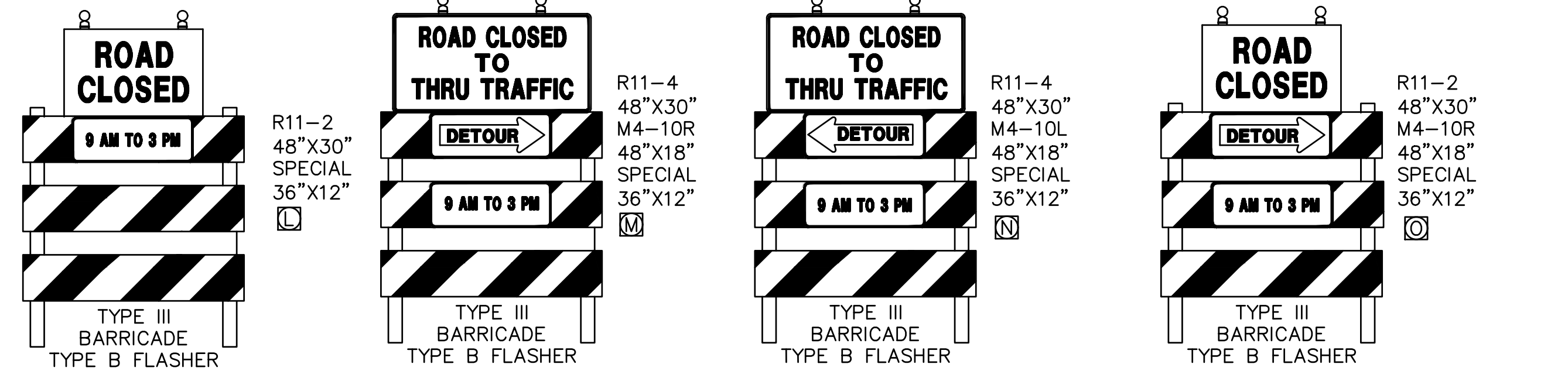
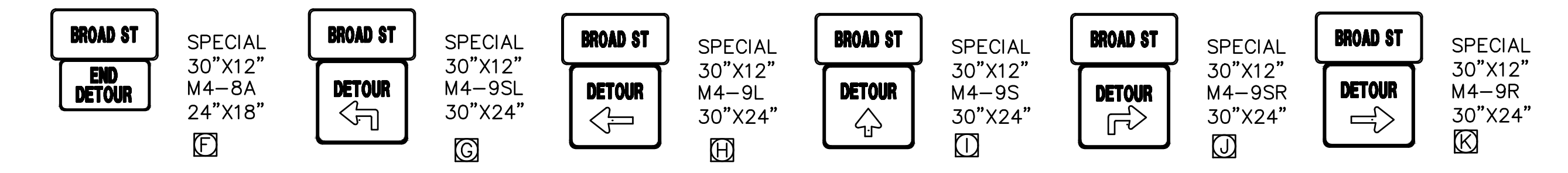
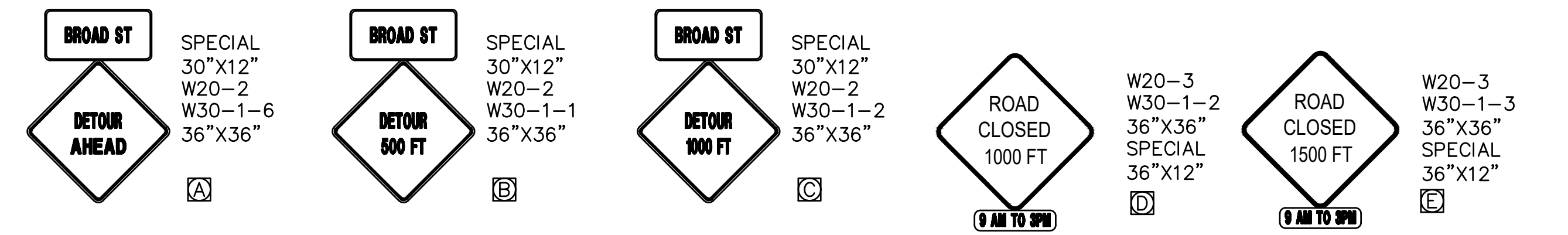
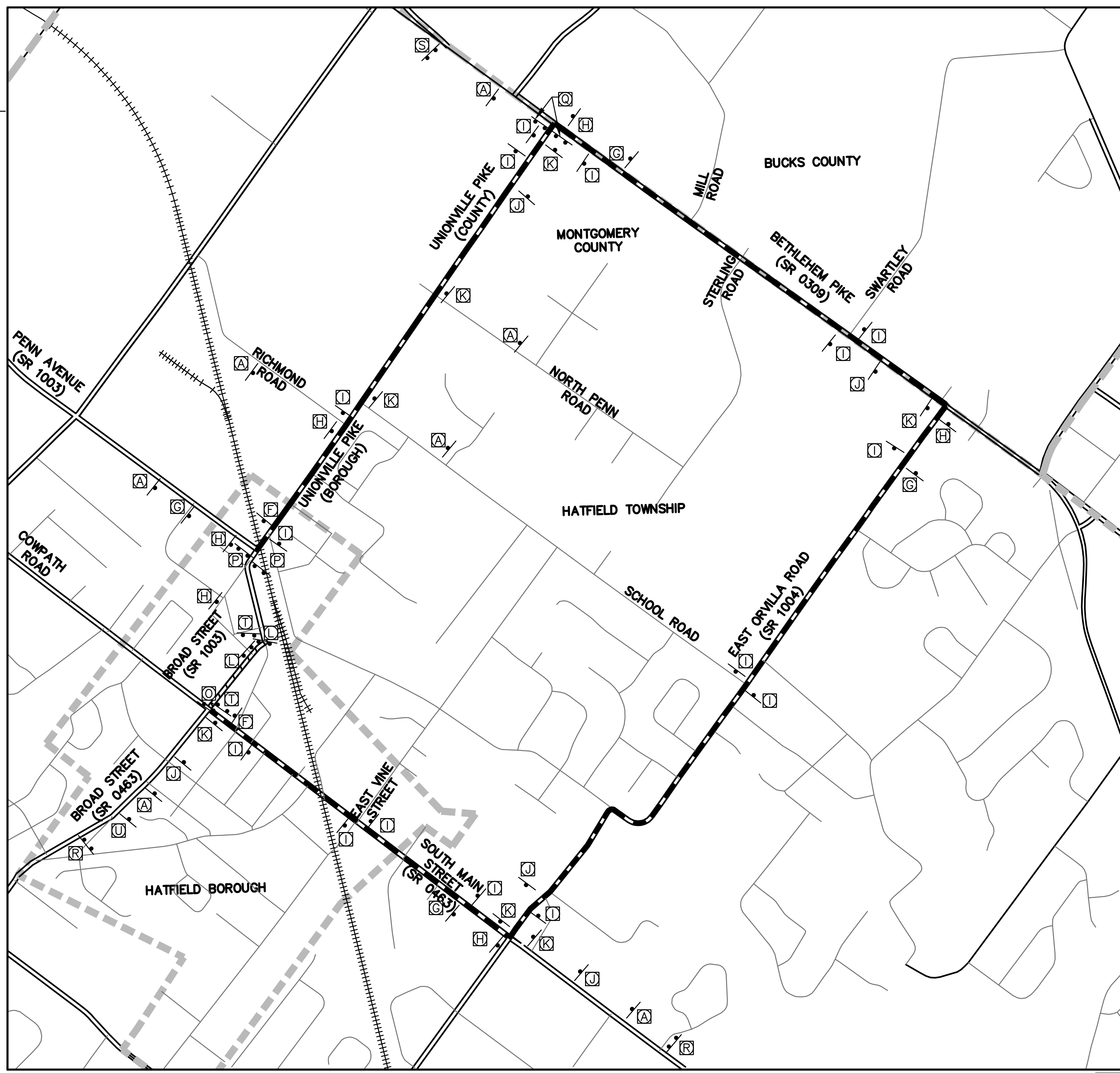
DISTRICT	COUNTY	ROUTE	SECTION	SHEET
6-0	MONTGOMERY COUNTY	-	-	2 OF 4
HATFIELD BOROUGH				
REVISION NUMBER	REVISIONS	DATE	BY	
1	REVISED PER PENNDOT COMMENTS	6/7/23	JMK	
2	REVISED PER PENNDOT COMMENTS	4/17/24	JMK	
3	REVISED PER PENNDOT COMMENTS	5/1/24	JMK	
4	REVISED PER PENNDOT COMMENTS	5/15/24	JMK	
5	REVISED PER PENNDOT COMMENTS	5/24/24	AKK	



DISTRICT	COUNTY	ROUTE	SECTION	SHEET
6-0	MONTGOMERY COUNTY	-	-	3 OF 4
HATFIELD BOROUGH				
REVISION NUMBER	REVISIONS	DATE	BY	
1	REVISED PER PENNDOT COMMENTS	6/7/23	JMK	
2	REVISED PER PENNDOT COMMENTS	4/17/24	JMK	
3	REVISED PER PENNDOT COMMENTS	5/1/24	JMK	
4	REVISED PER PENNDOT COMMENTS	5/15/24	JMK	
5	REVISED PER PENNDOT COMMENTS	5/24/24	AKK	

DETOUR NOTES:

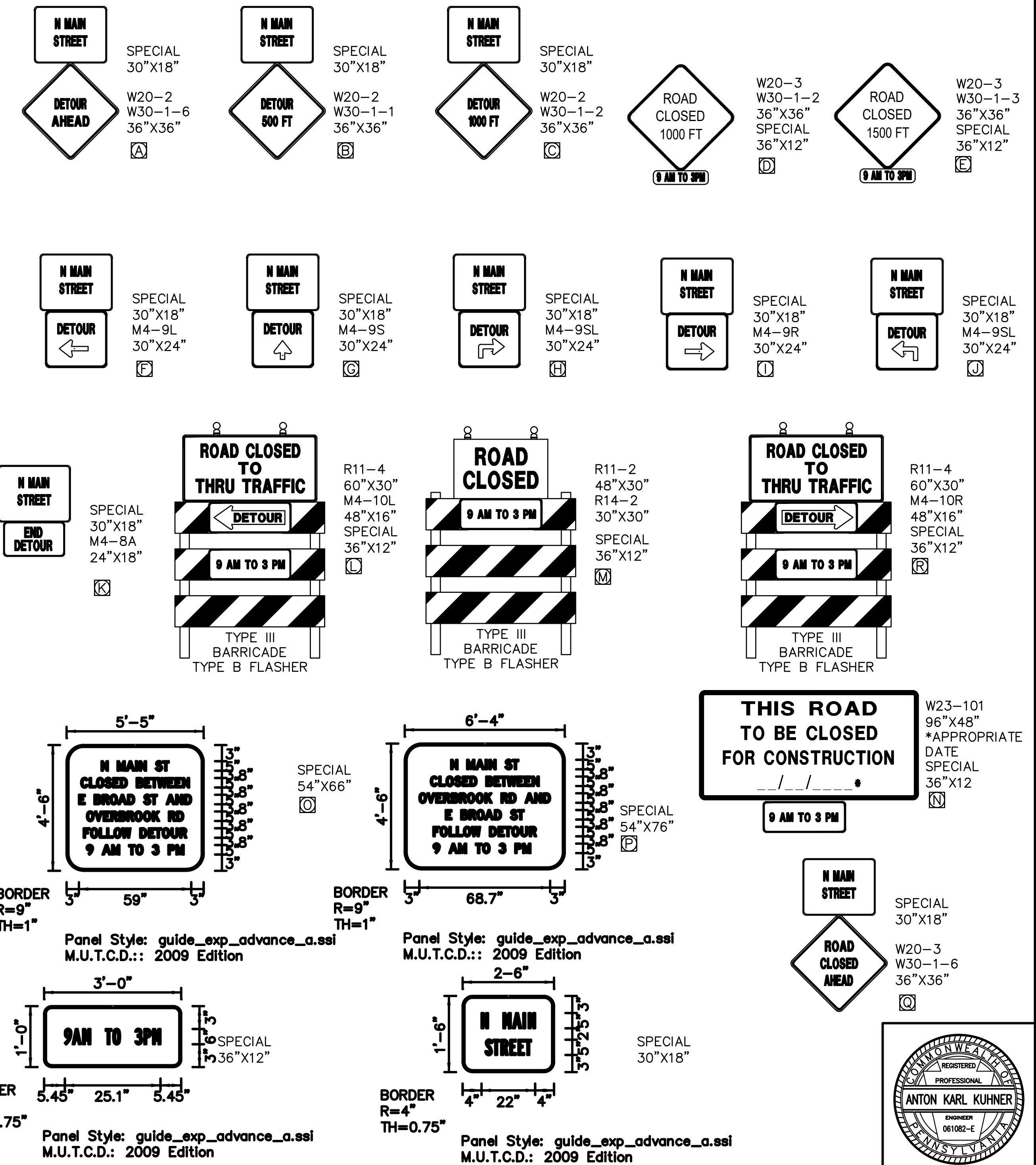
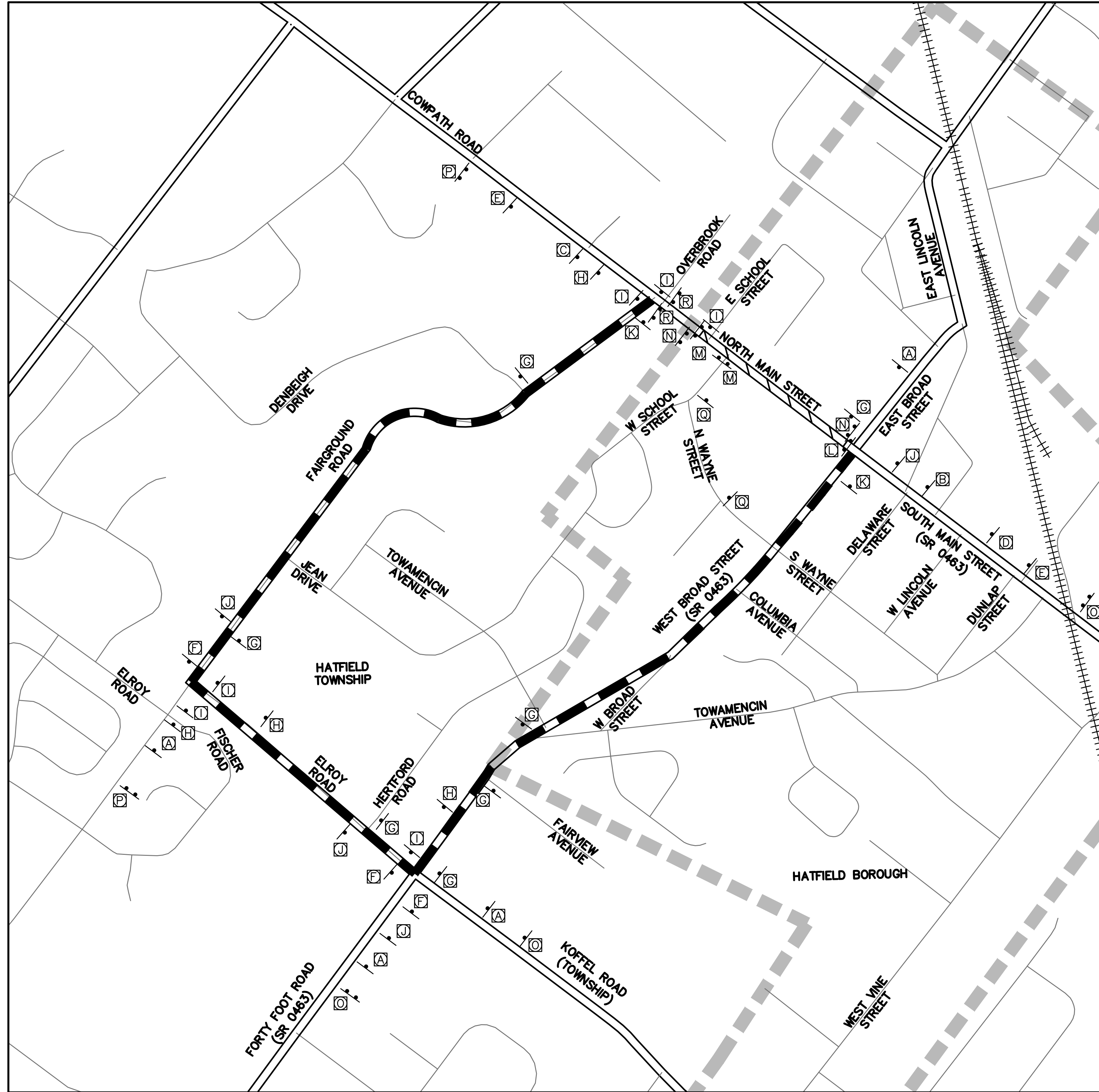
- ALL SIGN DISTANCES MAY BE ADJUSTED SLIGHTLY TO FOR FIELD CONDITIONS.
- ACCESS WILL BE MAINTAINED TO ALL EXISTING DRIVEWAYS DURING CONSTRUCTION.
- TEMPORARILY REMOVE OR COVER ALL CONFLICTING SIGNS.
- ERADICATE ALL CONFLICTING PAVEMENT MARKINGS.
- THE SPECIAL SIGNS SHALL CONFORM TO THE FOLLOWING:
 - 5" SERIES B LETTERING MINIMUM
 - ORANGE REFLECTORIZED BACKGROUND
 - BLACK LEGEND
- THE "THIS ROAD TO BE CLOSED FOR CONSTRUCTION" SIGNS (SIGN O) WITH TYPE III BARRICADES WILL BE PLACED AT EACH END OF WORK AREA 2 WEEKS IN ADVANCE OF THE ROAD BEING CLOSED UNTIL THE ROAD IS CLOSED. SIGNS TO BE REMOVED WHEN DETOUR IS PUT INTO EFFECT.
- MODIFY SIGNAL TIMINGS, IF REQUIRED.
- COVER ALL SIGNS THAT ARE NOT APPLICABLE DURING DETOUR.
- DETOUR LENGTH - 4.71 MILES



DISTRICT	COUNTY	ROUTE	SECTION	SHEET
6-0	MONTGOMERY COUNTY	-	-	4 OF 4
HATFIELD BOROUGH				
REVISION NUMBER	REVISIONS	DATE	BY	
1	REVISED PER PENNDOT COMMENTS	6/7/23	JMK	
2	REVISED PER PENNDOT COMMENTS	4/17/24	JMK	
3	REVISED PER PENNDOT COMMENTS	5/1/24	JMK	
4	REVISED PER PENNDOT COMMENTS	5/15/24	JMK	
5	REVISED PER PENNDOT COMMENTS	5/24/24	AKK	

DETOUR NOTES:

- ALL SIGN DISTANCES MAY BE ADJUSTED SLIGHTLY TO FOR FIELD CONDITIONS.
- ACCESS WILL BE MAINTAINED TO ALL EXISTING DRIVEWAYS DURING CONSTRUCTION.
- TEMPORARILY REMOVE OR COVER ALL CONFLICTING SIGNS.
- ERADICATE ALL CONFLICTING PAVEMENT MARKINGS.
- THE SPECIAL SIGNS SHALL CONFORM TO THE FOLLOWING:
 - A. 5" SERIES B LETTERING MINIMUM
 - B. ORANGE REFLECTORIZED BACKGROUND
 - C. BLACK LEGEND
- THE "THIS ROAD TO BE CLOSED FOR CONSTRUCTION _____" SIGNS (SIGN N) WITH TYPE III BARRICADES WILL BE PLACED AT EACH END OF WORK AREA 2 WEEKS IN ADVANCE OF THE ROAD BEING CLOSED UNTIL THE ROAD IS CLOSED. SIGNS TO BE REMOVED WHEN DETOUR IS PUT INTO EFFECT.
- MODIFY SIGNAL TIMINGS, IF REQUIRED.
- COVER ALL SIGNS THAT ARE NOT APPLICABLE DURING DETOUR.
- DETOUR LENGTH - 1.82 MILES



LEGEND

- LOCAL ROAD
- STATE ROUTE
- WORK ZONE
- SIGN AND IDENTIFYING LETTER
- TOWNSHIP BOUNDARY
- RAILROAD
- DETOUR ROUTE

SCALE

0 400 800 FEET

